

NAVIPAC

NETMC VIDEO CONTROL

Last update: 22/02/2021
Version: 4.5

Contents

1	NetMC Video control	3
2	Setup	4
3	Automatic use	4
4	Operation	4
5	Commands	5

1 NetMC Video control

The general user interface of the **NetMCtrl** program.

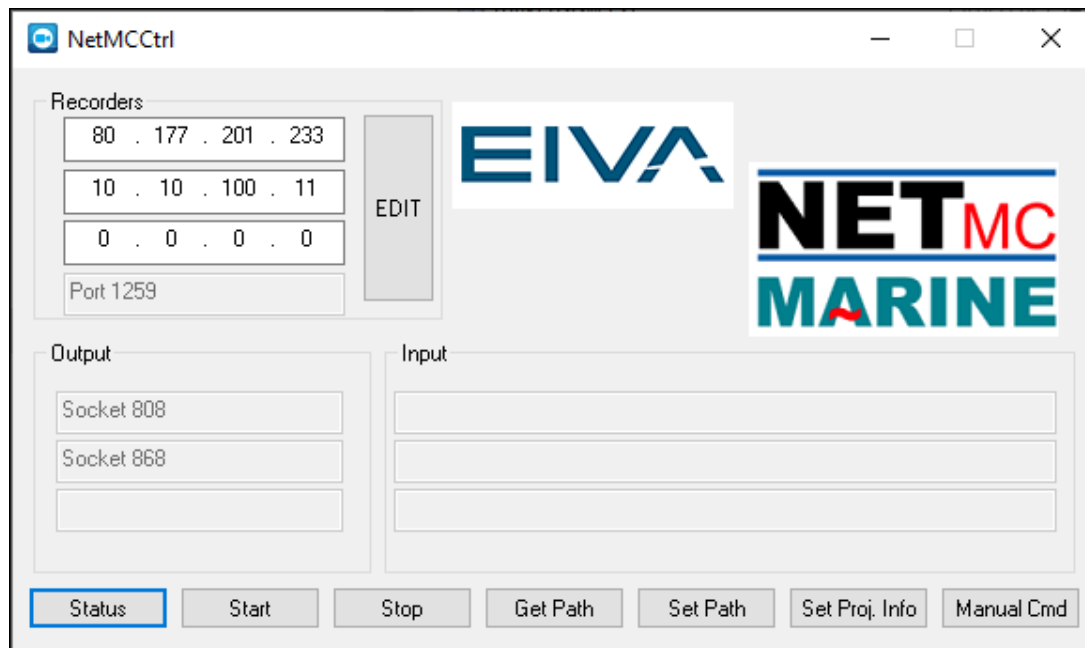


Figure 1 NetMCtrl program

This program can be used together with **NaviPac** or as stand-alone and allows you to control and monitor up to three NetMC recorders, and thus assists synchronising data and video.

Please note that the module uses a protocol proprietary for NetMC which means that it cannot be used with other solutions.

For stand-alone usage start the program from C:\EIVA\NaviPac\Bin\NetMCtrl.exe.

2 Setup

The **NetMCtrl** program communicates with the NetMC units via simple UDP/IP networking messages. Three recorders can be defined and talk on the same port (default 1259) but use individual IP addresses.

Use the **EDIT** button to define the IP addresses in a simple ASCII file:

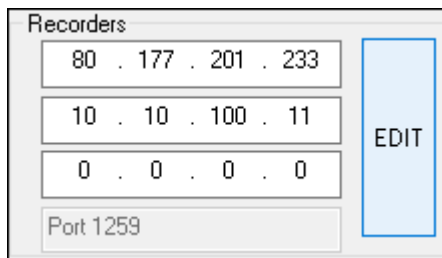


Figure 2 Setup NetMC recorders

```
[NetMC]
Port=1259
IPMINE=0.0.0.0
IP1=80.177.201.233
IP2=10.10.100.11
IP3=0.0.0.0
```

Where 0.0.0.0 means not available. The value for IPMINE must be 0.0.0.0.

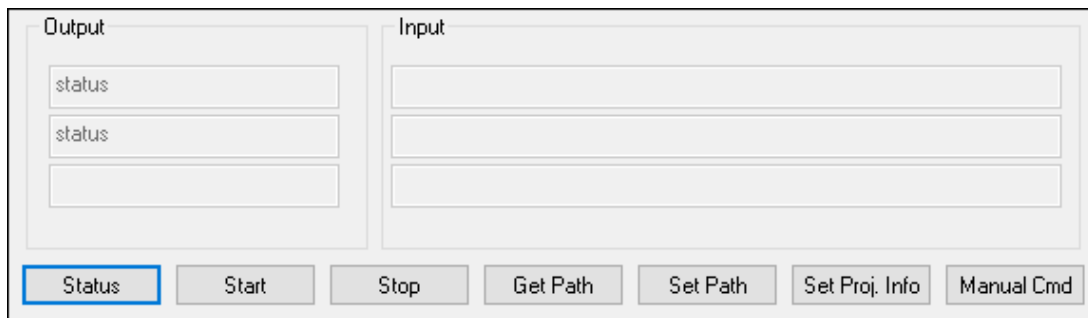
3 Automatic use

The program will -when started- monitor NaviPac and pass recording information on to NetMC:

- When NaviPac starts recording (from the NaviPac Online/Log Data or from Helmsman's Display) a start message (record) is send to the video.
- When NaviPac stops recording (LogData or from Helmsman's Display) a stop message (stop) is send to the video.

4 Operation

The lower part of the window defines a series of predefined commands that can be used manually by the operator.



The interface consists of two main sections: 'Output' on the left and 'Input' on the right. The 'Output' section contains three text boxes, the first two of which are labeled 'status'. The 'Input' section contains three empty text boxes. Below these sections is a row of seven buttons: 'Status' (highlighted with a blue border), 'Start', 'Stop', 'Get Path', 'Set Path', 'Set Proj. Info', and 'Manual Cmd'.

Figure 3 NetMCtrl manual commands.

Button name	NetMC command	Input	Result
Status	"status"	Ask for status	Status = ...
Start	It sends two commands: "record" "get store_current"	Start recording	OK / NOT OK
Stop	"stop"	Stop recording	OK / NOT OK
Get Path	"get store_path"	Ask for recording path	Show path where the data is recorded
Set Path	"set store_path .."	Prompts user to enter the path and sends it to NetMC. Note, no validation of correctness.	
Set Project Info	"set store_prefix .."	Prompts user for text eg Job prefix (default is the NaviPac project name) and sends it to NetMC.	Name will be used as part of recording name
Manual command	xxx	Prompts user for a manual command and sends it to NetMC.	

Table 1 Table with predefined manual commands.

5 Commands

For updated list of commands for manual use please refer to NetMC system documentation.