

NAVIEDIT

TESTING THE ODBC CONNECTION

Last update: 25/02/2021
Version: 8.6

Testing the OCBD connection.

- The ODBC connection (the ODBC Data Source Name) must be working before you can run NaviEdit. This is found under Administrative Tools in the Windows Control Panel.

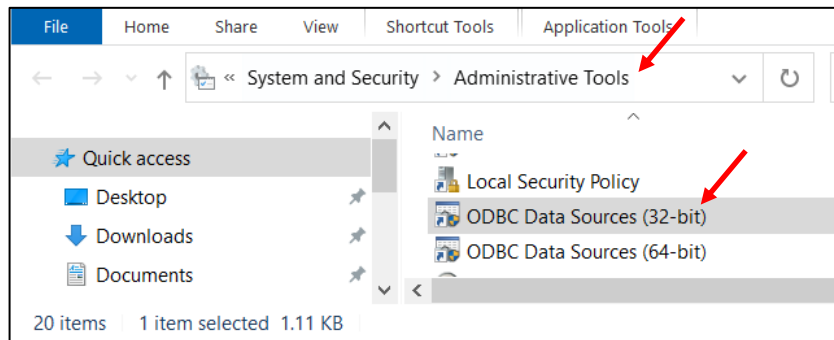
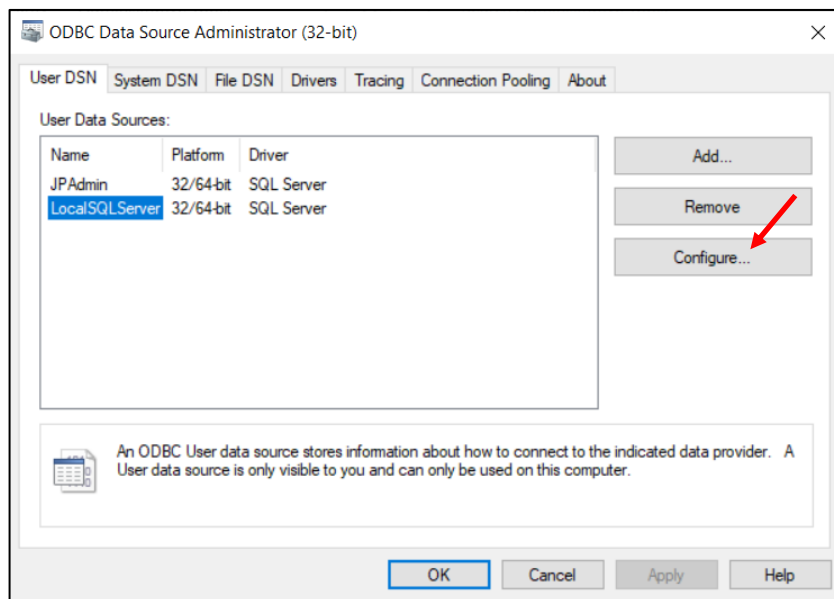
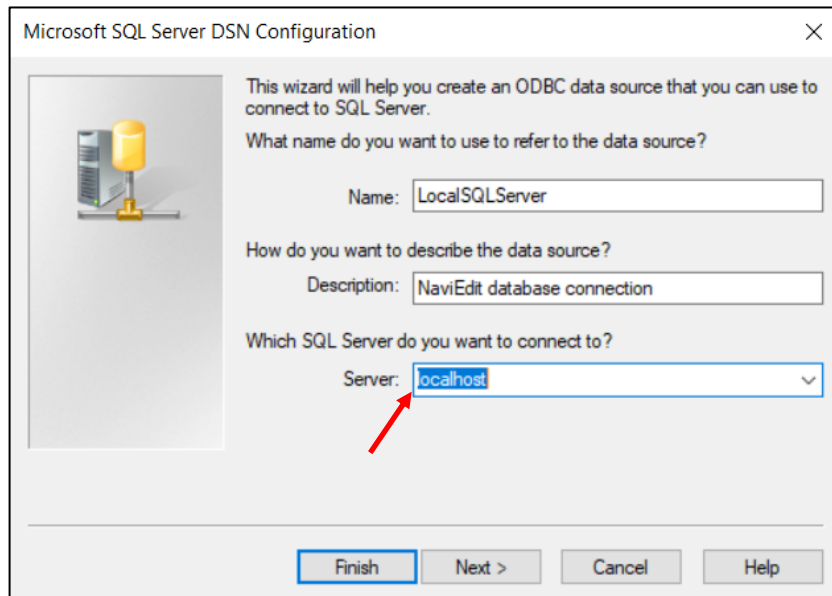


Figure 1 Windows ODBC Data Sources (32-bit)

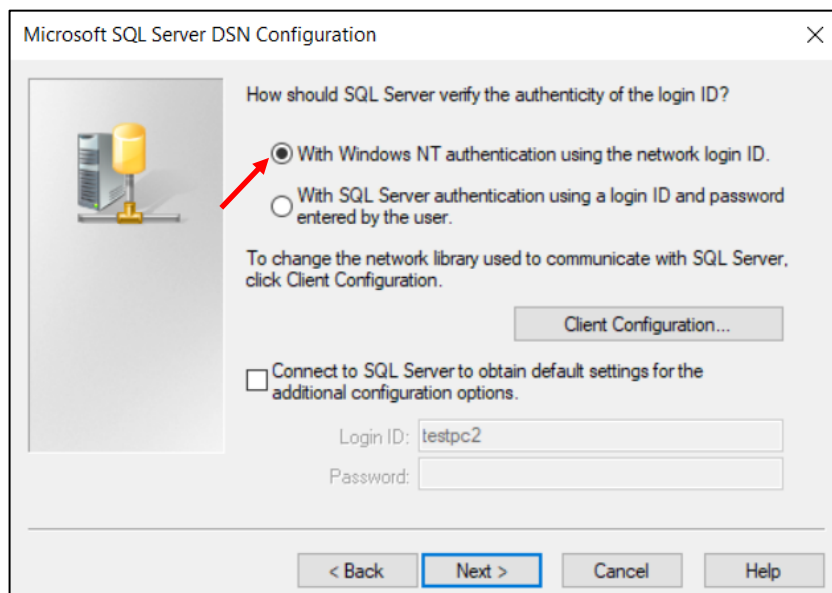
- The default ODBC Data Source Name is **LocalSQLServer**. Select this and hit **Configure**.



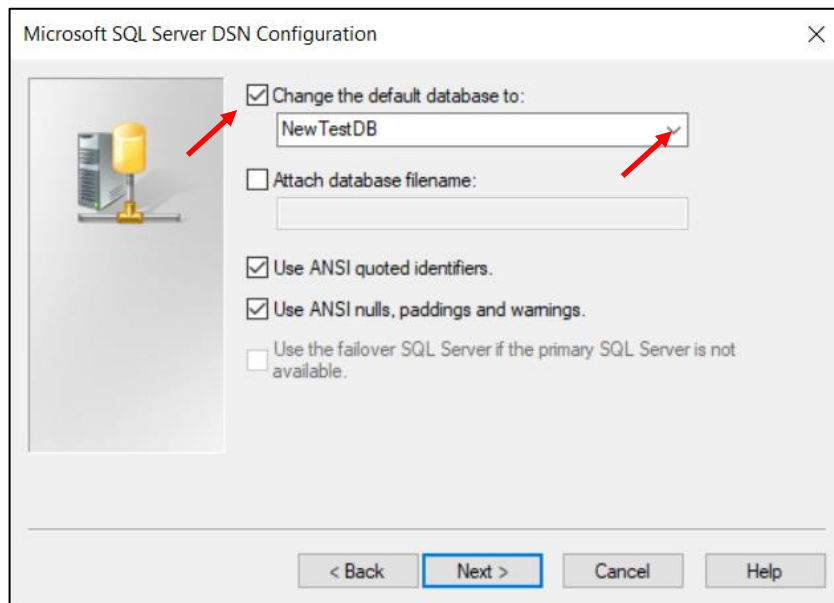
- The following screenshots show how to test this Data Source Name. The default SQL Server is the default instance running on your local computer.



- You must use Windows NT authentication.

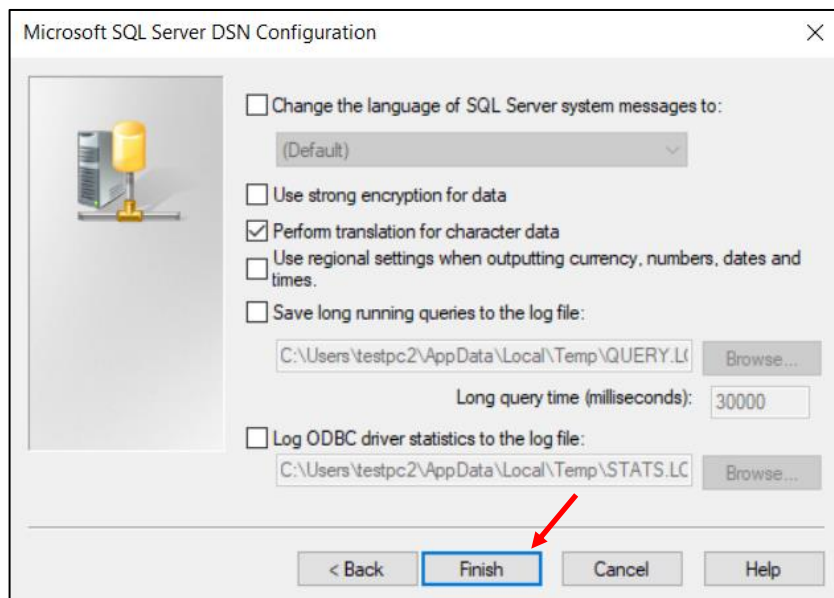


- You should be able to reselect the default database by opening the drop-down box:

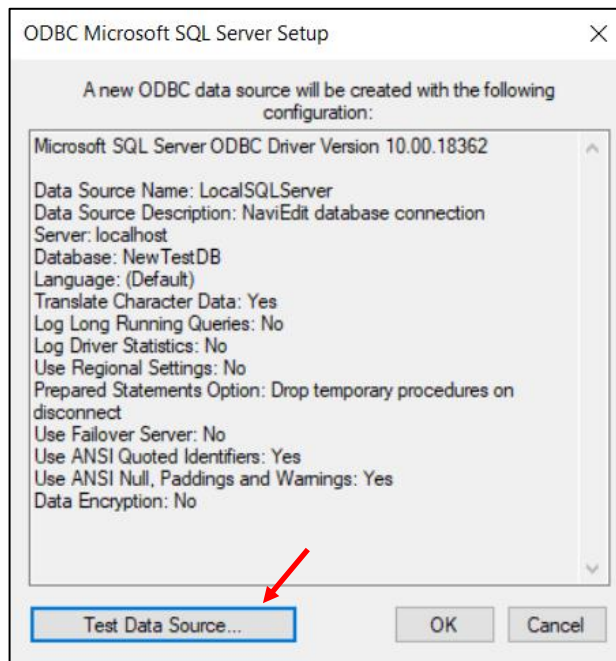


(If you do not have any database attached, just remove the check mark.)

- Hit **Finish**



- **Hit Test Data Source.**



This test must succeed. Otherwise NaviEdit cannot run.

